

ZOOMLION

**NEW** ZT58J  
ZT68J

TELESCOPIC BOOM LIFTS

CE Certified

## FEATURES

### Standard Features

- ▶ Horn
- ▶ Proportional control
- ▶ All motion alarm
- ▶ Flashing beacon
- ▶ Self-closing entry gate
- ▶ Emergency descent system
- ▶ Emergency stop button
- ▶ Auto-leveling system
- ▶ On-board diagnostic system
- ▶ Tilt protection system
- ▶ Load sensing system
- ▶ 4.3' Led display
- ▶ Swing-out engine tray
- ▶ Anemograph

### Accessories & Options

- ▶ Platform work light
- ▶ Anti-collision device

## HIGHLIGHTS

- ▶ Work height up to 58.8m and horizontal outreach up to 25.5m (ZT58J Only)
- ▶ Highest self-propelled telescopic boom lift with a Work height of 67.5m and a horizontal outreach of 31m (ZT68J Only)
- ▶ Industry's first polygonal innovative boom, boom weight reduced by more than 10%, vertical stiffness increased by 25%, torsion resistance increased by 20%, and offers small deformation and stable control
- ▶ X outrigger offers larger working envelope, stronger off-road ability, and better stability
- ▶ Intelligent control of four-wheel steering ensure coordination and consistency of outriggers during steering and expansion
- ▶ All-wheel steering angles are automatically matched ensure straight travel
- ▶ Five-section boom synchronously extends, efficient and stable

ACCESS WITH ZOOMLION GREEN

Phone: 0086(731)-88353680 0086(731)-88250971  
E-mail: awm@zoomlion.com

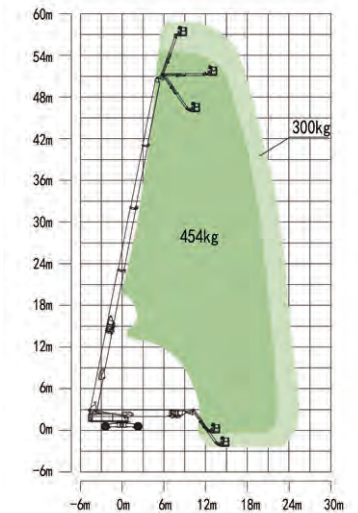
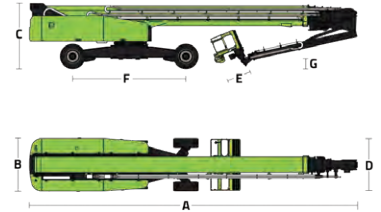
Add: ZOOMLION Wangcheng Industrial Park, Tengfei Road 997, Changsha, Hunan, China  
Web: www.en.zoomlion.com

# MAIN SPECS OF TELESCOPIC BOOM LIFTS

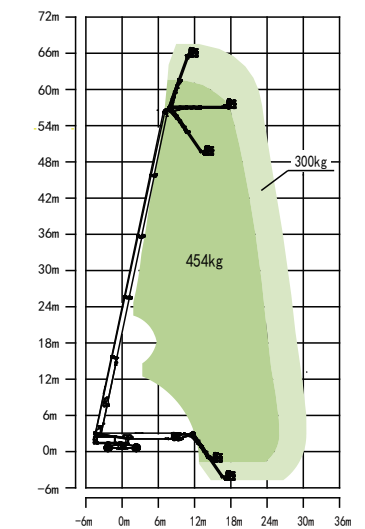
## ZT58J/ZT68J

Comply with CE Standard

| Model                                       | ZT58J   |                    | ZT68J   |                    |
|---|---|--------------------|---|--------------------|
|   | Metric  | Imperial           | Metric  | Imperial           |
| <b>Size</b>                                 |   |                    |   |                    |
| Work Height                                 | 58.8m   | 192ft 11in         | 67.5m   | 221ft 5in          |
| Platform Height                             | 56.8m   | 186ft 4in          | 65.5m   | 214ft 11in         |
| Horizontal Outreach                         | 25.5m   | 83ft 8in           | 31m   | 101ft 8in          |
| A - Stowed Length                           | 14.4m   | 47ft 3in           | 15.5m   | 50ft 10in          |
| B - Stowed Width                            | 2.5m  | 8ft 2in            | 2.5m  | 8ft 2in            |
| C - Stowed Height                           | 3.06m   | 10ft               | 3.06m   | 10ft               |
| D - Platform Length                         | 2.44m   | 8ft                | 2.44m   | 8ft                |
| E - Platform Width                          | 0.91m   | 3ft                | 0.91m   | 3ft                |
| F - Wheelbase                               | 5.357/4.69m   | 17ft 7in/15ft 5in  | 5.357/4.69m   | 17ft 7in/15ft 5in  |
| Tread                                       | 2.5/5.15m   | 8ft 2in/16ft 11in  | 2.5/5.15m   | 8ft 2in/16ft 11in  |
| G - Ground Clearance                        | 0.40m   | 1ft 4in            | 0.40m   | 1ft 4in            |
| <b>Performance</b>                          |   |                    |   |                    |
| Platform Capacity (Unrestricted/Restricted) | 300/454kg   | 660/1000lb         | 300/454kg   | 660/1000lb         |
| Drive Speed (Stowed)                        | 4.5km/h   | 2.8mph             | 4.5km/h   | 2.8mph             |
| Gradeability                                | 45%(24°)  |                    | 40%(22°)  |                    |
| Turning Radius (Inside)                     | 6.79/2.57m  | 22ft 3in/8ft 5in   | 6.79/2.57m  | 22ft 3in/8ft 5in   |
| Turning Radius (Outside)                    | 8.43/6.39m  | 27ft 8in/20ft 12in | 8.43/6.39m  | 27ft 8in/20ft 12in |
| Turntable Swing                             | 360° continuous   |                    | 360° continuous   |                    |
| Platform Rotation                           | ±90°  |                    | ±90°  |                    |
| Tail Swing                                  | 2.25m   | 7ft 5in            | 2.15m   | 7ft 1in            |
| Jib (Range of Articulation)                 | 125°(-55°~70°)  |                    | 125°(-55°~70°)  |                    |
| Max. Wind Speed                             | 12.5m/s   | 28mph              | 12.5m/s   | 28mph              |
| <b>Power</b>                                |   |                    |   |                    |
| Engine                                      | Cummins F3.8(EU V) 75kW/2200rpm<br>Cummins QSF3.8(EU III) |                    | Cummins F3.8(EU V) 75kW/2200rpm<br>Cummins QSF3.8(EU III) |                    |
| Fuel Tank Capacity                          | 200L  | 52.8gal            | 200L  | 52.8gal            |
| Control Voltage                             | 12V DC  |                    | 12V DC  |                    |
| Hydraulic Tank Capacity                     | 400L  | 105gal             | 400L  | 105gal             |
| Drive Mode                                  | 4WD   |                    | 4WD   |                    |
| Steering Mode                               | Four wheels/Front wheel/Crab                              |                    | Four wheels/Front wheel/Crab                              |                    |
| <b>Tire</b>                                 |   |                    |   |                    |
| Type  | 445/50 D710<br>Foam-filled Tires                          |                    | 445/50 D710<br>Foam-filled Tires                          |                    |
| <b>Weight</b>                               |   |                    |   |                    |
| Gross                                       | 29600kg   | 65256lb            | 35900kg   | 79145lb            |



Range of Motion ZT58J



Range of Motion ZT68J